

Landscape Plant Identification

Deciduous Shrubs (24)

Brilliant Red Chokeberry - *Aronia arbutifolia* 'Brillantissima'



- Leaf- alternate, obovate, 1.5" - 3.5" long, 0.5" to 0.75" wide, shiny, dark green or medium green on upper surface and fuzzy gray-green on the underside, fine, even serrations
- Flower- many clusters of small, white flowers, bloom is not overwhelming
- Fruit- red pome, 0.25" diameter, in flat clusters



Brilliant Red Chokeberry – con't

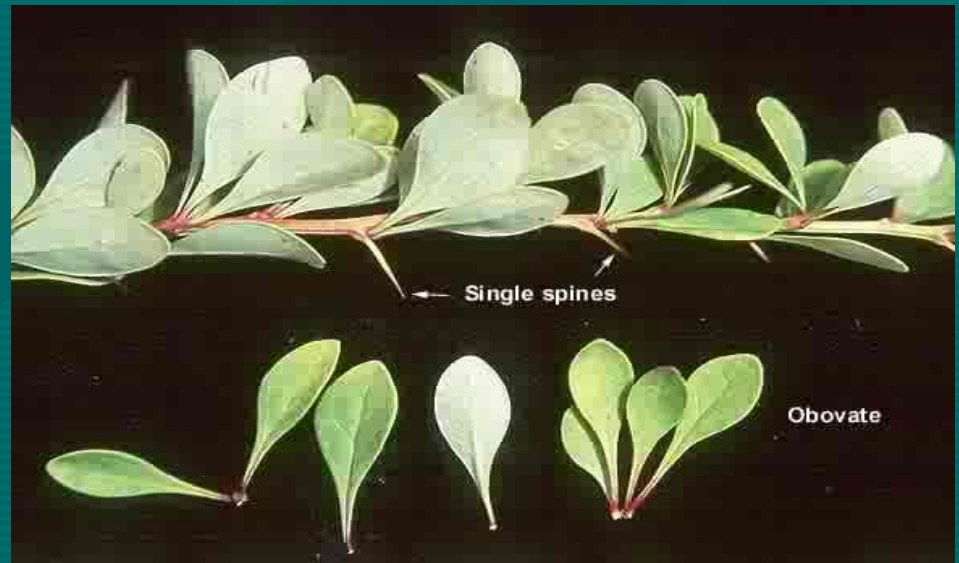


- Twig- brown, small stem diameter
- Habit-6'-10' tall and 3' - 5' wide, suckering, spreading, colonizing shrub with numerous, slender stems, individual plants tend to have a very upright, narrow form and can be sparsely branched at the base

Japanese Barberry, *Berberis thunbergii*



- Leaf: alternating, spatulate, maroon to green leaves
- Flower: small, yellow in spring



Japanese Barberry - con't



- Fruit: occasional small red berries
- Twig: alt. buds and sharp “barbs”
- Habit: 2-3’ round, upright bush

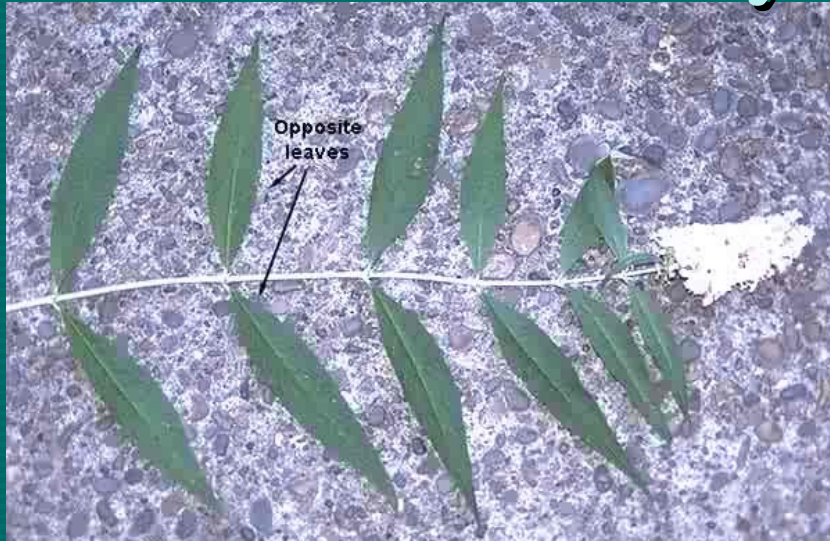


Butterfly Bush- *Buddleia davidii* *hybrids*



- Leaf-opposite, simple, 4" to 10" long and 1" to 3" wide, margins very finely toothed, gray green to green above and white and fuzzy on the underside
- Fruit- small capsules, not showy
- Flower-common color is lilac with orange in the throat, available in pink, red, purple, and white as well, attractive to butterflies and moths

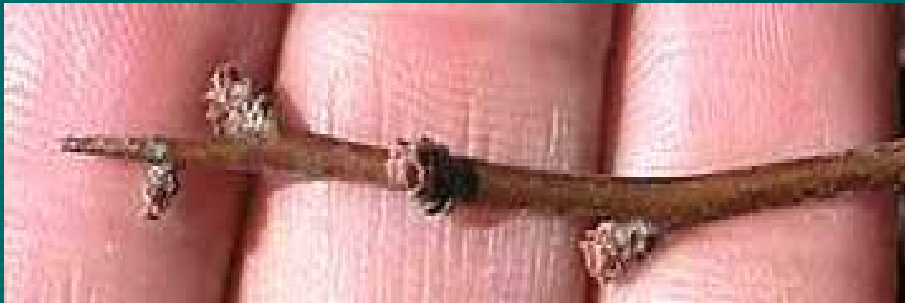
Butterfly Bush- con't



- Twig-new stems are greenish, older stems develop gray-brown bark that exfoliates slightly in vertical shreds
- Habit-5' to 10' tall, produces large arching canes



Flowering Quince, *Chaenomeles*



- *speciosa*
Leaf: Alternate, simple, fine round teeth on margin, ovate, 2 to 3 1/2 long, large circular stipules, shiny dark green above
- Flower: most commonly red, showy
- Twig: slender, ends with thorn, small buds



Flowering Quince - con't



- Fruit: large, green and red cherry type fruit
- Habit- multi-stemmed shrub
- 6'-10' tall, rounded outline, but somewhat variable, very dense with, branches are spiny, or with spurs



Redtwig dogwood, *Cornus alba* 'Sibirica'



- Leaf: opp., ovate, dark green, pinnate, prominent venation, smooth margin
- Fruit: sometime small, creamy clusters
- Twig: red (<2 yrs), many stems at base of shrub



Redtwig dogwood - con't



- Flower: mini flowers in broad inflorescence, occur in May
- Habit: bushy shrub



Cranberry cotoneaster-*Cotoneaster apiculatus*



- Leaf: small, round, teardrop shape; dark green, reddish in fall; one defined vein; alt. leaves
- Flower: many small clusters of pink/white flowers in May or June



Cranberry Cotoneaster – con't



- Fruit: pea-sized red berries develop in August
- Twig: reddish brown; small alt. buds; many arching branchlets (ugly)
- Habit: low lying but not viney



Dwarf Winged Euonymus – *Euonymus alatus* ‘Compactus’



- AKA: “American Burning Bush”
- Leaf: green in summer, brilliant red in fall; opposite, eye-shaped leaf
- Fruit: occasional red berries
- Twig: appears square with 4 “wings”



Border Forsythia – *Forsythia x intermedia*



- Leaf: yellow in spring (always), green in summer/fall; ovate or elliptical, 4" long, serrated upper half, smooth lower margin; opposite
- Flower: bright yellow in March/April, 4 petals

Border Forsythia – con't



- Fruit: N/A
- Twig: green when new, olive or brown when mature, many spots from lenticels
- Habit: medium, upright, oval bush



Oakleaf Hydrangea – *Hydrangea quercifolia*



- Leaf: dk green, opp. large oak-like lobes but more palmate, maybe serrated; red in fall; defined veins
- Habit: med-lg round, bushy shrub



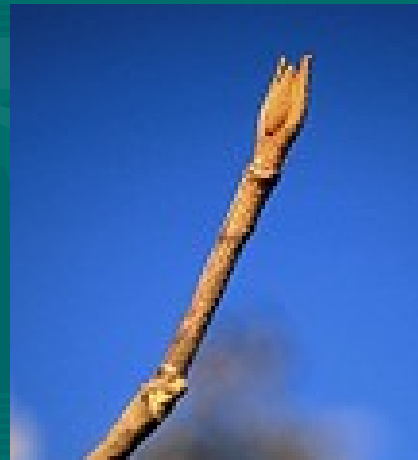
Oakleaf Hydrangea – con't

- Flower: prom. creamy white, 4 petals



Fruit: small brown, not prominent

Twig: orange-brown color, w/ unique bud on tips



Winterberry Holly - *Ilex verticillata*



- Leaf-alternate arrangement
1.5" to 3" long and 0.75" to 1.25" wide
- Fruit- only on female plants, bright red and glossy, into winter, held close to the stem, singly or in pairs, green during the growing season, changing in October
- Flower- male flowers cluster, female flowers solitary or in 2's or 3's, small white



Winterberry Holly- con't

- Twig- dark gray to brown, generally smooth with some lenticels
- Habit- multi-stemmed, generally 6' to 10' tall, oval to rounded form, upright and spreading



Privet, *Ligustrum spp.*



- Leaf: opposite arrangement, ovate or elliptical shape, serrated margin
- Flower: small white
- Twig: opp. buds



Privet - con't



- Fruit: green pea sized berries, black in winter
- Habit: upright, bushy



Northern Bayberry – *Myrica*

pennsylvanica



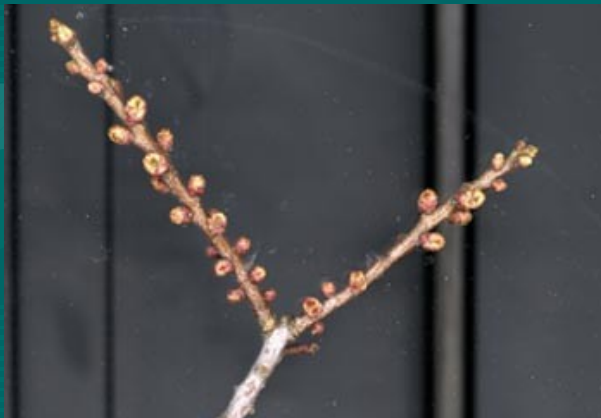
- Leaf: elongated, dark green, whorled leaf arrgmt.; one defined midvein
- Fruit: small gray berries in fall/winter, green in growing season
- Flower: smells like the candle



Northern Bayberry – con't



- Twig: many round buds, so appeared whorled arrangement
- Habit: larger, upright shrub



Potentilla - *Potentilla fruticosa* hyb.



- Leaf-alternate, compound, pinnate, elliptic and linear 3 to 7 leaflets per leaf, medium blue-green to dark green leaf color
- Fruit- dry, brown not noticeable
- Flower- yellow, buttercup flowers
- Habit- dense, upright



Purpleleaf Sand Cherry- *Prunus cistena*



- Leaf- alternate, has a reddish-purple color, leaves have a serrated leaf margin, thick leathery texture, elliptical leaf shape
- Fruit-blackish purple fruit
- Flower-pink-purple in color, fragrant, emerge after leaf set in spring



Purpleleaf Sand Cherry- con't



- Twig-reddish brown
- Habit- fine texture, 7' to 10' tall



Deciduous azalea –

Rhododendrum hybrids

- Leaf: green, narrow
- Flowers: yellows, oranges and reds; openly funnel shaped petals
- Fruit: N/A
- Twig: N/A
- Habit: spread of 6-8' high and around



Little Princess Spirea-*Spiraea japonica* 'Little Princess'

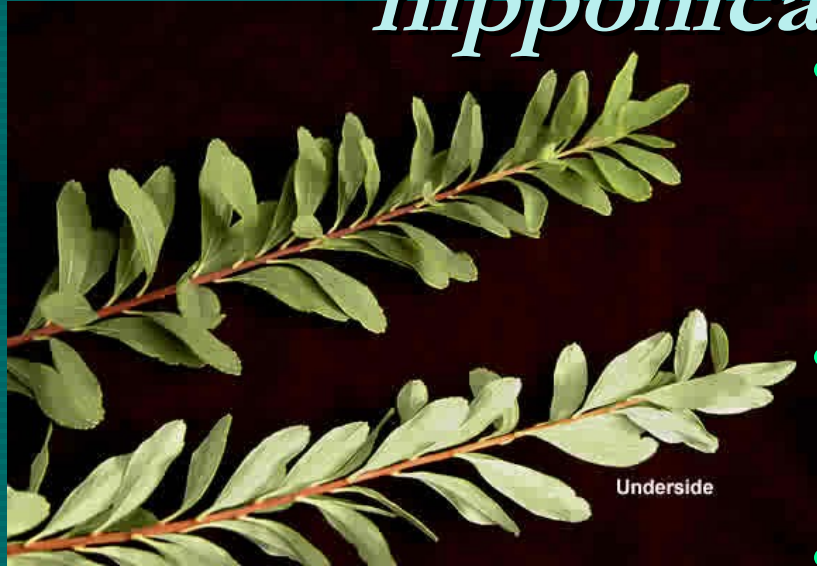


- Leaf- alternate, ovate 1" to 3" long, serrate margin; sharp
- Fruit- dry, brown follicles, hold through winter, not showy
- Flower- rosy-pink, clustered, up to 12" across, showy
- Habit- 4' to 5' tall, equal or greater spread, rounded



Snowmound Spirea - *Spiraea*

nipponica 'Snowmound'



- Leaf- alternate, simple, serrated tips, dark bluish-green, 1" to 1.5" long .
- Fruit- brown capsules, hold through winter.
- Flower- white, form along top of the stems, very abundant.



Snowmound Spirea – con't

- Twig- reddish brown color, covered in ridges, striped and exfoliating, from base
- Habit- vase-shaped, 3' to 5' tall, very neat and kept appearance.



Goldflame Spirea - *Spiraea x bumaldi* 'Goldflame'



- Leaf- alternate, medium serration, light green, pink to red in fall
- Flower- bright pink to purple clusters of tiny flowers, cover entire bush.

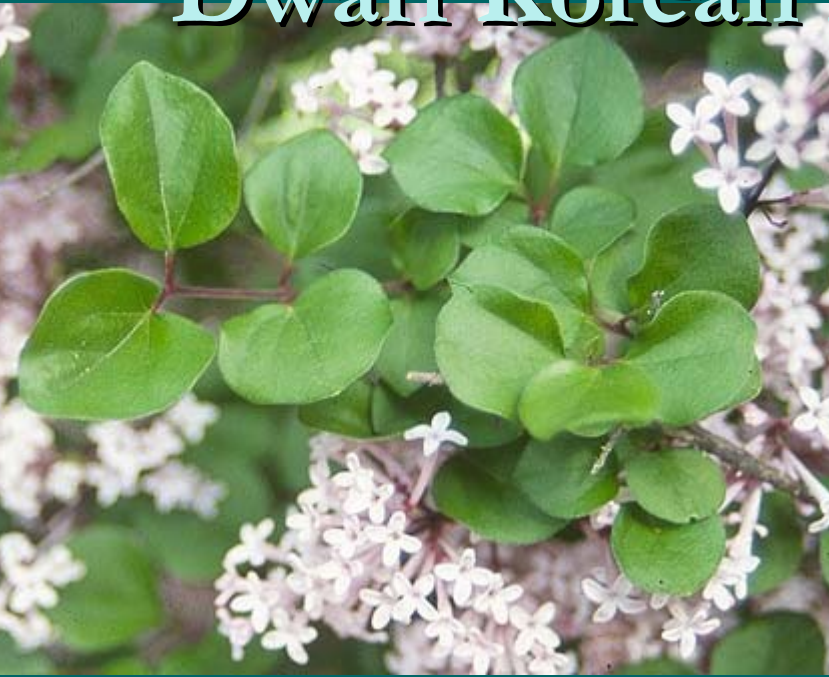
Goldflame Spirea – con't



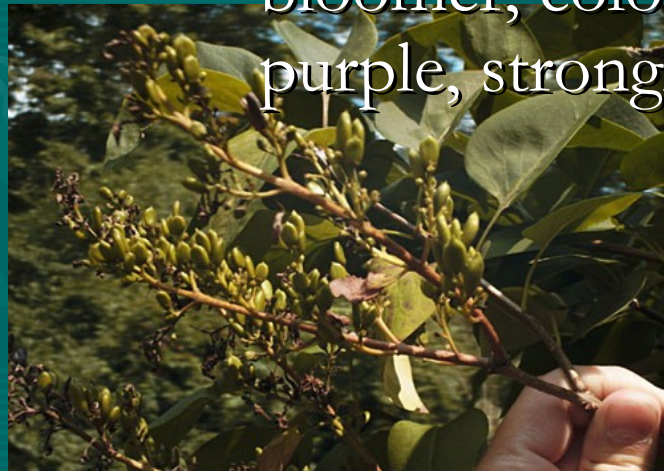
- Twig- Red to maroon, straw like.
- Habit- overall round bush, grows quickly.



Dwarf Korean Lilac- *Syringa meyeri*



- Leaf- opposite, simple, elliptic to ovate shape, 0.75" to 1.75" long, newly emerged foliage has a reddish rim, matures to dark green
- Fruit- a small brown capsule
- Flower- numerous clusters of small tubular flowers; a heavy bloomer, color is pink to pale purple, strongly fragrant



Dwarf Korean Lilac- con't



- Twig- stems are gray-brown, shoots have prominent lenticels
- Habit- multi-stemmed, rounded, broad shape, dense and twiggy, but clean and not ratty, small



Common Lilac - *Syringa vulgaris*



- Leaf- opposite, simple, ovate, 2" to 5" long, subcordate leaf base, entire margin, dark green leaf color
- Flower- lilac, fragrant, borne in large terminal panicles, panicles are 4" to 8" long
- Fruit-capsules borne in large panicles, located at the terminal tips of branches, capsules are beaked





Common Lilac – con't

- Twig- light-gray bark, smooth, stems are stout, small raised lenticels, raised leaf scars
- Habit- an upright, deciduous shrub, 8' to 15' tall, 6' to 12' wide, lower parts of the branches do not have leaves



Koreanspice Viburnum – *Viburnum*

carlesii

- Leaf: broadly ovate, with cuspidate tip some serrations, opp., dull, dusty green color; fall – brill. red
- Flower: snowball like cluster of small pink flowers in April; very fragrant



Koreanspice Viburnum – con't



- Fruit: clusters of red, pea-sized fruit near top of shrub
- Twig: woody or herb stem with soft white opp. buds like all vib.
- Habit: upright shrub



Compact European Cranberrybush

Viburnum opulus 'Compacta'



- Leaf- 3 primary lobes entire margin is irregularly and coarsely toothed, 2" to 4" long and wide, dark green color, petioles with distinct disk-like or suction cup-shaped glands



- Flower- small white flowers held in flat clusters, less showy fertile inner flowers are surrounded by a ring of showier sterile flowers



Compact European Cranberrybush-



con't

- Fruit- bright red berries, held in pendulous clusters, individual fruits are 0.4" in diameter
- Habit- multi-stemmed, rounded shape, upright-spreading to irregular and arching branching, typically branched to the ground, dense and compact, 8' to 10' tall or even taller



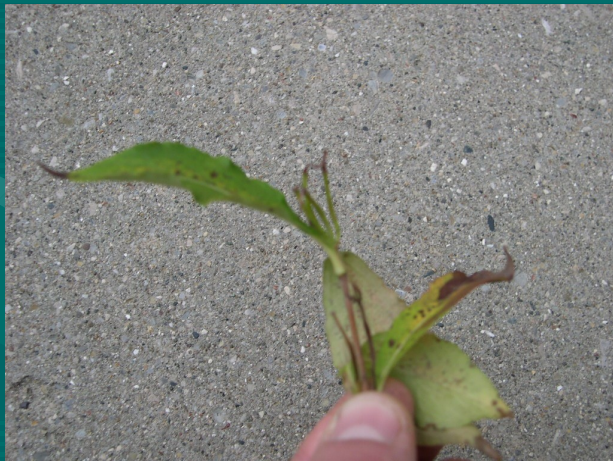
Doublefile Viburnum – *Viburnum plicatum* var. *tomentosum*



- Leaf: oval or elliptical with serrate “files”, defined venation, opposite leaves
- Flower: brilliant white in spring
- Fruit: N/A
- Twig: stem with soft, opp., white buds
- Habit: larger bushy shrub



Wiegela – *Weigela florida*



- Leaf: elongated and narrow, sharp, cusp. point, opp arrgmt; defined midvein; slight serrations
- Fruit: Long narrow green seedhead, turns black in winter
- Twig: brown/grey, opp buds with black seedheads remaining

Wiegela – con't



- Flower: pink/red and bugle shaped
- Habit: Sm/med open shrub

