

Landscape Plant Identification

Deciduous Trees (30)

General info on Deciduous

- Deciduous plants (perennials) lose leaves in fall
- Deciduous trees produce hardwood lumber
- ID hierarchy
 - Leaf 1st
 - Flower 2nd
 - Fruit 3rd
 - Twig 4th

Paperbark Maple - *Acer griseum*



- Leaf-broad, flat, pinnately compound, margins toothed, leaflets different in size and shape
- Flower- inconspicuous, green
- Fruit-paired wings, 60 to 90 degrees apart, about 1" - 1.5" long



Paperbark Maple- con't



- Twig- is cinnamon to reddish-brown, paper-thin, and it peels off the trunk and branches in narrow strips.
- Habit-height 20' - 30'



Japanese Maple – *Acer palmatum*



- Leaf: Finely serrated; palm/spider-like
- Flower: red
- Fruit: green/red helicopters at an obtuse angle



Japanese Maple – con't



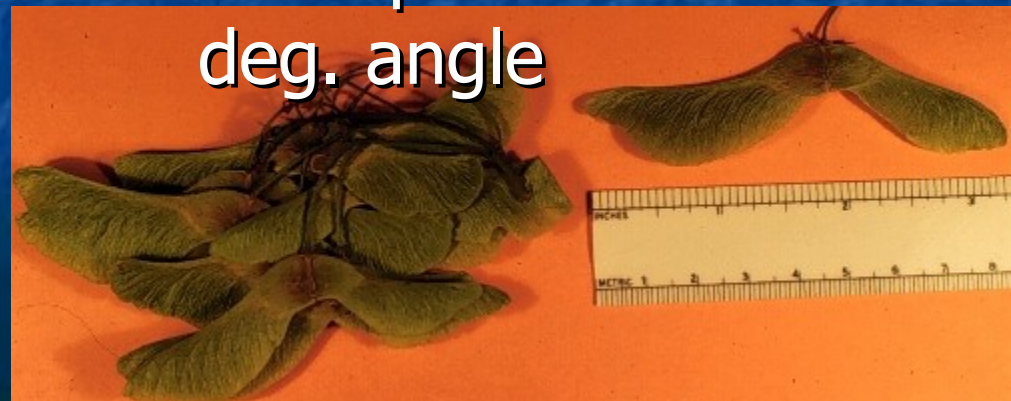
- Twig: reddish-green; terminal bud absent
- Habit: 15 to 25 ft in height



Norway Maple-*Acer platanoides*



- Leaf: tips curled to a point, simple, opp., 5 lobes, smooth leaf margin
- Flower: green
- Fruit: greenish/tan helicopters at 170 deg. angle



Norway Maple – con't



- Twig: large “noidy”, scaly buds
- Habit: 40 to 60 ft tall; rounded crown



Red Maple - *Acer rubrum*



- Leaf: simple, opp. 3-5 lobes, some serrations; brilliant red in fall
- Flower: red/orange, showy female flower





Red Maple – con't

- Fruit: red helicopters attached at a 45 deg. angle
- Twig: red w/ spots
- Habit: 40 to 70 ft tall



Sugar Maple - *Acer saccharum*



- Leaf: opp., simple, 5 lobes, sm. Leaf margins
- Flower: sm. yellowish green



Sugar Maple – con't



- Fruit: helicopters attached at a <45 deg. angle
- Twig: smaller, prominent triple terminal buds; white lenticel markings
- Habit: upright, 75 ft tall



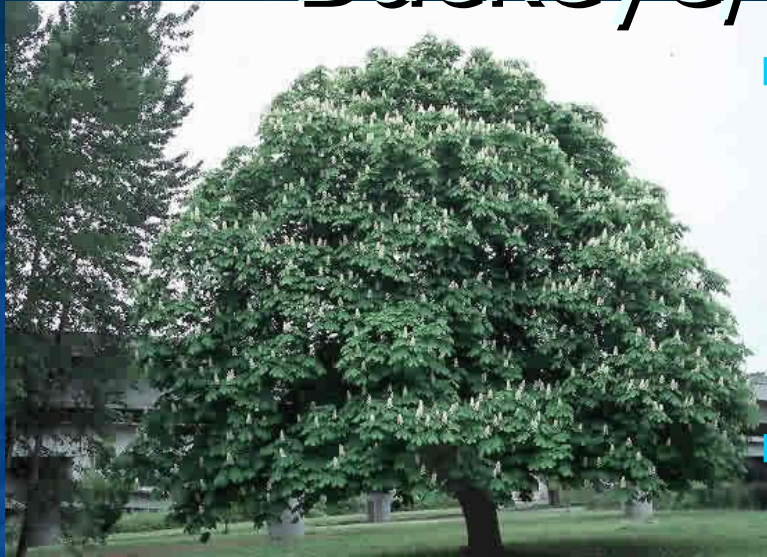
Buckeye/Horsechestnut- *Aesculus spp.*



- Leaf-opposite, palmately-compound with 7 leaflets, each leaflet is 4" to 10" long and obovate, veins are impressed making them appear corrugated
- Flower- very showy, white with a blotch of yellow and red color at the base.
- Fruit- buckeye



Buckeye/ Horsechestnut



- Habit- 50' to 75' tall, upright-oval to rounded form lower branches hang down with branch tips turning upward
- Twig- older branches and the trunk reveal showy orange bark underneath, most of the bark is dark gray and brown



Serviceberry - *Amelanchier laevis*



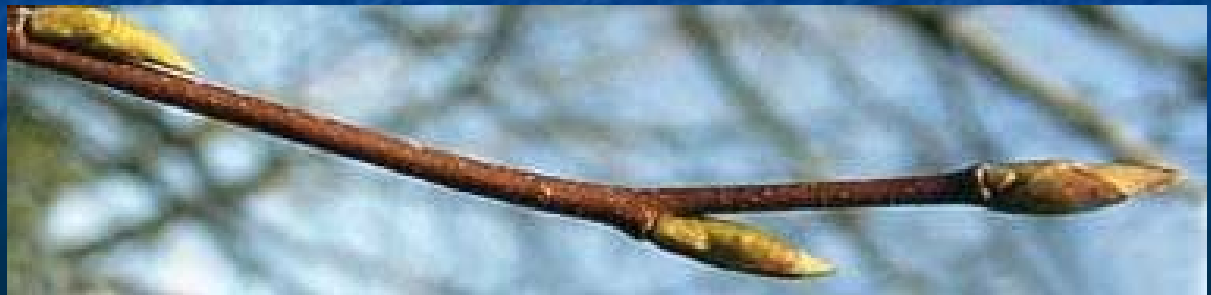
- Leaf: simple, oval in shape, finely serrated, alt., pinnate venation
- Flower: white, showy



Serviceberry – con't



- Fruit: small red edible, has growth on bottom
- Twig: pointed conical buds, brownish-red twig that often zig-zags
- Habit: small, round tree



River Birch - *Betula Nigra*



- Leaf: alt., simple, waxy, angular veins, doubly serrated
- Fruit: 1/2" to 1" long seed cones that break into many seeds; pencil size in diameter



Betula nigra
Photo by Dan Tenaglia

River Birch – con't

- Twig: trunk has papery bark
- Habit: upright growth 50 to 70
- ft. tall



European Hornbeam- *Carpinus betulus*



- Leaf: elongated, simple, alt., veins are at 45 deg. Angle, textured
- Flower: ugly, droopy
- Twig: smooth, fluted, showy steel bark





European Hornbeam – con't

- Fruit: yellow, maple-like helicopter clusters
- Habit: broad and round, over-sized shrub appearance



Redbud- *Ceris canadensis*



- Leaf: heart shaped, alternating, simple
- Flower: brilliant pink/red



Redbud – con't



- Fruit: green/red pea pods
- Twig: reddish brown to dk brown
- Habit: sm, round tree 20-30'

Flowering Dogwood – *Cornus florida*



- Leaf: simple, opposite, ovate, pinnate, prominent venation, rounded serrations

- Flower: 4 petaled white



Flowering Dogwood – con't



- Fruit: sm. Red cherries w/ some sort of growth on the bottom of it.
- Twig: buds look like alien eyes!!
- Habit: upright, 30 ft tall



Kousa Dogwood – *Cornus kousa*



- Leaf: opp, curled, med green leaves; pinnate venation; acuminate tip; red in fall
- Flower: sm. Green surrounded by 4 lg wht petals



Kousa Dogwood – con't



- Fruit: lg red raspberry looking fruit; green in summer
- Twig: trunk peels like London Planetree
- Habit: small up to 30'



Washington Hawthorn - *Crataegus phaenopyrum*



- Leaf: serrated, simple, lobed, alt., subcordate leaf base,
- Flower: white, doesn't bloom for long





Washington Hawthorn – con't

- Fruit: red berries w/ a red thing on the bottom
- Twig: has 1/2-1" thorns
- Habit: upright, 25 to 30 ft tall



European beech - *Fagus sylvatica*



- Leaf: defined 45 deg. Angle veins, simple, serrated, alt.
- Flower: N/A
- Fruit: ball /spines on them



European beech – con't



- Twig: spines
- Habit: upright, 50 to 60 ft. tall



Green Ash - *Fraxinus pennsylvanica*



- Leaf: opp., pinnately compound, 7 leaflets, serrated, pinate veinations, cuspadate point
- Flower: N/A
- Fruit: several seeds, greenish/tan

Green Ash – con't

- Twig: opposing twigs stick out at 180 degrees as they spiral up twig, twigs gray and buds brown
- Habit: upright 60-70 ft tall



Ginko - *Ginkgo biloba*



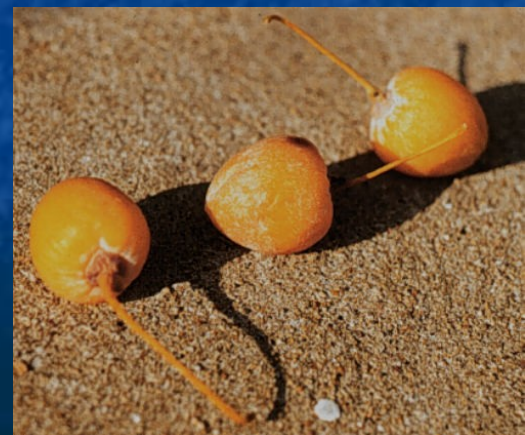
- Leaf: alt., simple, looks like a hand fan or an inside out umbrella
- Flower: N/A doesn't flower until after tree is 20yrs old



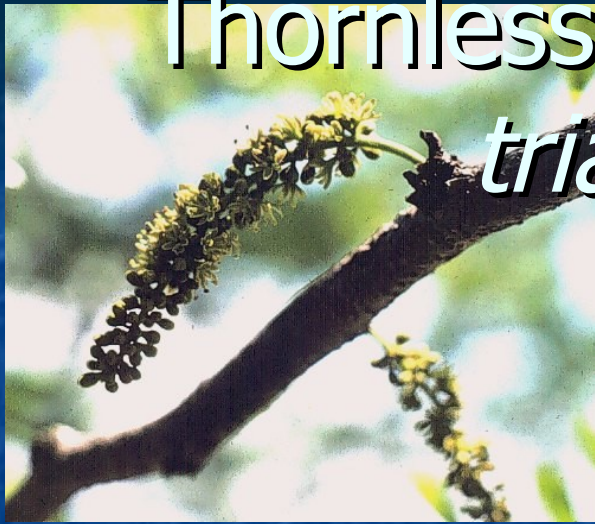
Ginko – con't



- Fruit: light orange to tan color, clusters of 2-6, smells bad
- Twig: thick twig w/short stubby buds
- Habit: upright, 40 to 80 ft tall



Thornless honeylocust - *Gleditsia triacanthos inermis*



- Leaf: alt., pinnately or bipinnately compound,
- Flower: sm. Greenish-yellow, fragrant



Thornless honeylocust – con't



- Fruit: 7-18" long, flat, twisted bean looking pods
- Twig: "swollen joints"
- Habit: upright, 50 to 60 ft tall



American Sweetgum - *Liquidambar styraciflua*



- Leaf: alt., simple, 5-7 lobes, serrated, looks like a star
- Flower: yellowish-green, not very showy



American Sweetgum – con't



- Fruit: ball covered in spikes
- Twig: 2 yr old twig has a worm like growth on it.
- Habit: upright, 60-80 ft tall



Star Magnolia – *Magnolia stellata*



- Leaf: waxy, elongated leaf
- Fruit: small, scale-like clump for seed head (pineapple); reddish tip
- Twig: reddish, brown



Star Magnolia – con't

- Flower: brilliant, large white, "star"-shaped in spring
- Habit: med. round shrub
- Bud: fuzzy cone



Sweetbay magnolia - *Magnolia virginiana*



- Leaf: alt., simple, smooth leaf margins, elongated, comes to a rounded point, green surface, white under
- Flower: creamy white w/ 9-12 petals



Sweetbay magnolia – con't



- Fruit: turns green to red,
- Twig: smooth green bark, or twig
- Habit: upright 30-50 ft tall



Saucer Magnolia - *Magnolia x soulangiana*



- Leaf: elliptical w/ a sharp tip, pear shaped leaf
- Flower: large, white, showy, sometimes fragrant



Saucer Magnolia – con't



- Fruit: 4" long knobby seedhead
- Twig: fuzzy, conical bud up to 1" long
- Habit: upright, 30 ft tall



Flowering Crabapple - *Malus species*



- Leaf: simple, alt., purple, very finely serrated, defined veins,
- Flower: 5 petals, pink/red/white, bloom April-May, showy



Flowering Crabapple – con't



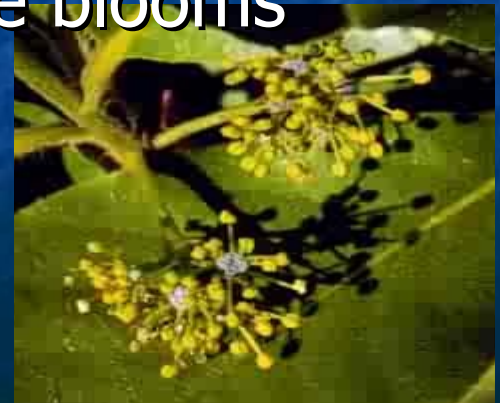
- Fruit: mini red apples
- Twig: reddish brown with white spots
- Habit: upright, 15-20 ft tall



Sourgum - *Nyssa sylvatica*



- Leaf- alternate, simple, ovate, 3" to 6" long, 1.5" to 3" wide, entire margins.
- Fruit- bluish-black drupes, female trees only
- Flower- not showy, small white blooms



Sourgum- con't



- Twig-slender, reddish brown stems, branches at a stiff 90 degree angle, distinctive leaf scar

Habit-30' to 50' tall, 20' to 30' wide, pyramidal in youth maturing to a flat-topped crown



London Planetree - *Platanus x acerifolia*

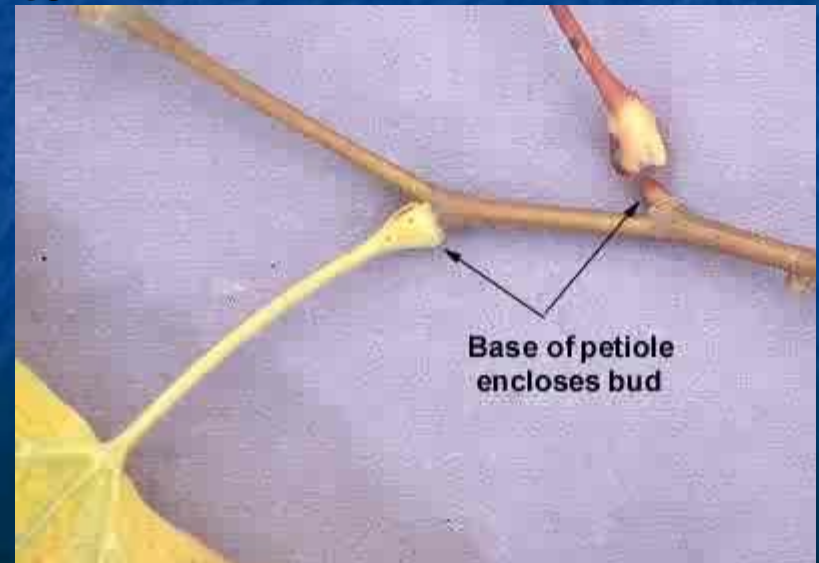


- Leaf: looks like a maple leaf, prominent veins, grainy bottom sides
- Fruit: dulled spike ball (not spiky like sweetgum)



London Planetree – con't

- Twig: pointy buds, disease looking, “peeling sunburn” bark
- Habit: upright, 70 ft tall



Thundercloud Flowering Plum-

Prunus cerasifera

'Thundercloud'



- Leaf: alt, serrated, purple leaf, pointed tip
- Fruit: 1" reddish drupe (uncommon)
- Flower: pinkish white



Thundercloud Flowering Plum-

con't

- Twig: dark reddish, brown
- Habit: small, dec. tree



Flowering Pear- *Pyrus calleryana*

CVS.



- Leaf: alt., simple, ovate leaf shape, taco shell like leaves, very finely serrated, very waxy
- Flower: white, attractive, has about 5 petals



Flowering Pear- con't



- Fruit: olive-tan-brown w/ sm. Spots, u.s.d. blueberry
- Twig: large terminal hairy buds
- Habit: 30 to 40 ft tall



Pin Oak - *Quercus palustris*



- Leaf: alt., simple, 5-7 lobes, sharply lobed.
- Flower: N/A



Pin Oak – con't

- Fruit: acorns
- Twig: alt. buds, several buds clumped together on terminal end
- Habit: upright, 75 ft tall



Red Oak - *Quercus rubra*



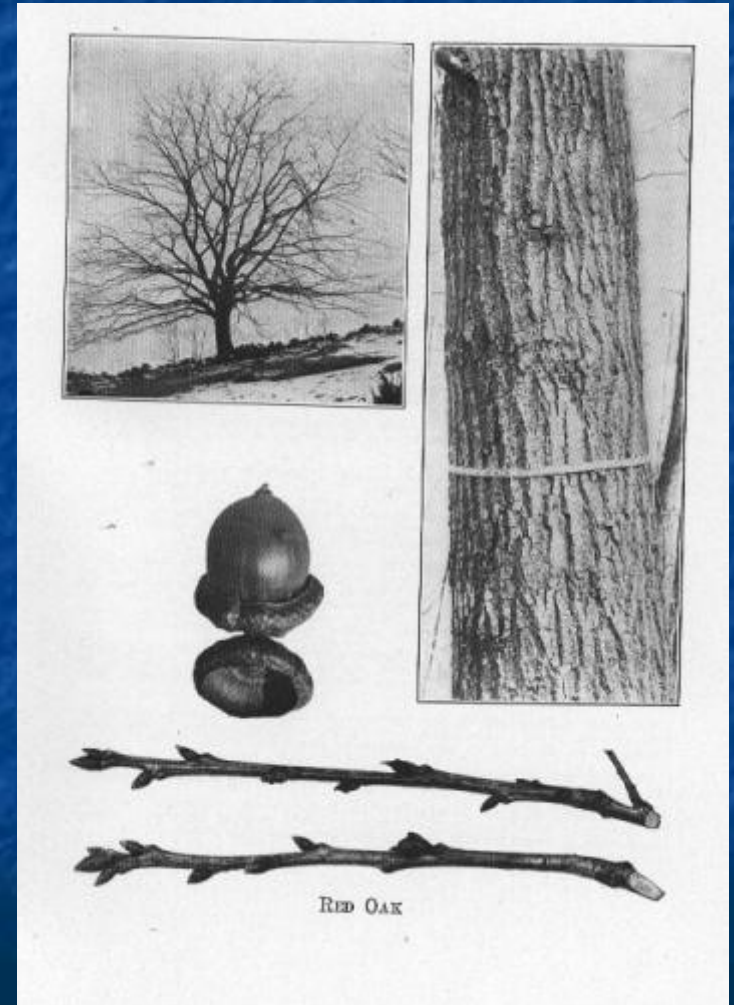
- Leaf: alt., simple, "red men hunt w/ arrows (pointy), white men hunt w/ bullets (rounded) pointed leaves
- Flower: N/A





Red Oak – con't

- Fruit: acorn
- Twig: alt. buds
- Habit: upright, 75 ft tall



Littleleaf Linden - *Tilia cordata*



- Leaf: simple, alt., heart shaped, cordate leaf base; other long, narrow
- Flower: light yellow, found in clusters



Littleleaf Linden – con't



- Fruit: small round nutlet, cream color
- Twig: reddish
- Habit: upright, 50-60 ft tall



Wisteria- *Wisteria floribunda*



- Leaf-pinnately compound, contain 13 to 19 leaflets that are 10" to 15" long, alternate.
- Fruit-flattened, 4-6 in long, narrowed toward the base, and constricted between the seeds



- Flower-showy, clusters of pea-like flowers, blue-violet to reddish violet, fragrant, clusters are 8" to 20" long



Wisteria- con't

- Twig-old trunks develop fluted, muscle-like form, bark is gray in color.
- Habit- climbing, reaches heights of 35 or taller, climbs by twining around structures, circles in a clockwise fashion



Deciduous Trees

- Any questions???